

# Exploring Equitable Public Bike Share: Mapping Access Across Vancouver Neighbourhoods

Christine Yanagawa, Ph.D. Student  
Dr. Kate Hosford  
Faculty of Health Sciences, SFU



# Land Acknowledgment

"The ***urgency of Indigenous mobility injustices*** cannot be overstated. ***It's time*** for planning professionals, municipalities and transport agencies ***to recognize*** that ***transportation is a reconciliation imperative*** too."

Jaimy Fischer, Mobilizing Justice scholar



# How did you get here today?

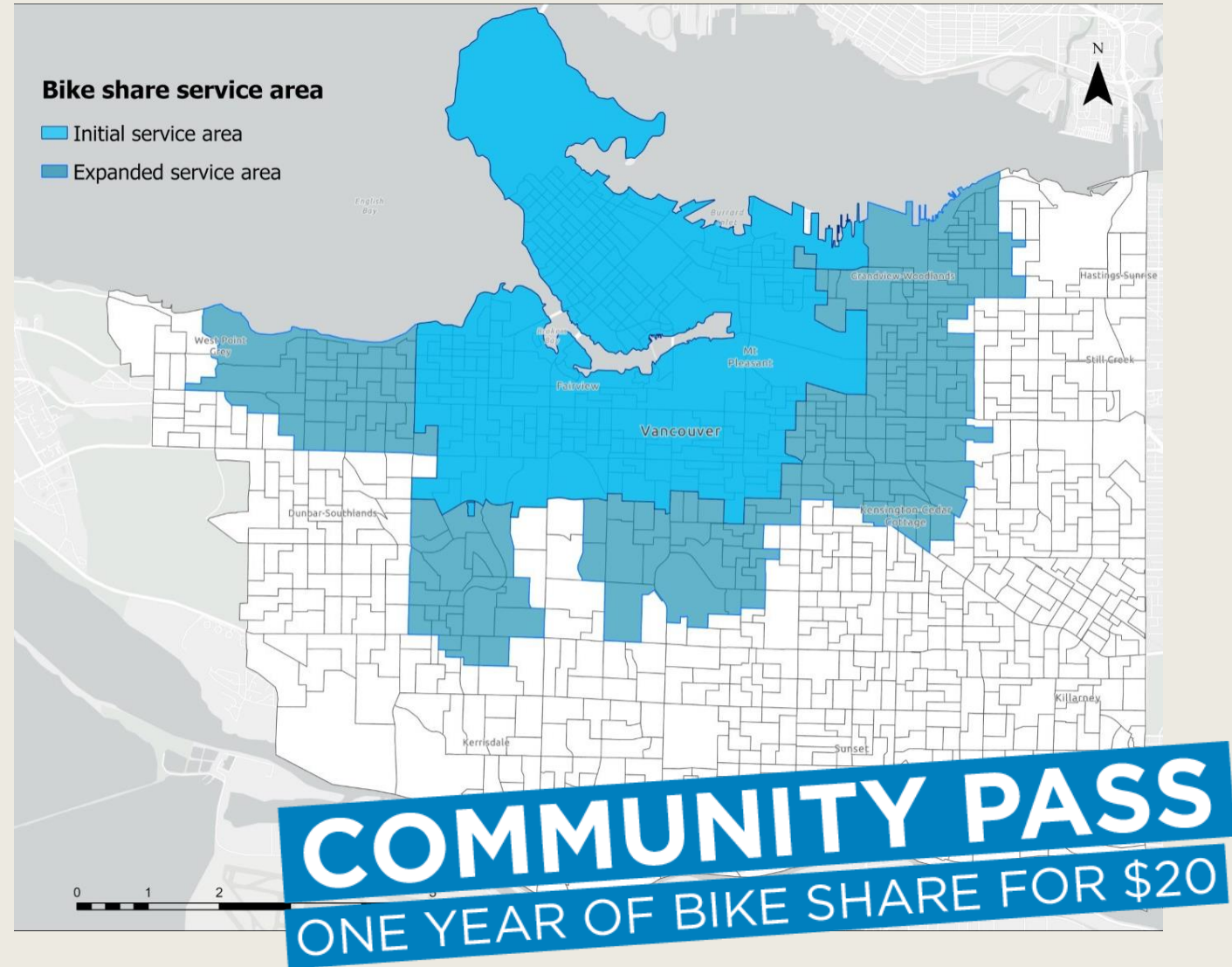
---



# Vancouver's Public Bike Share System

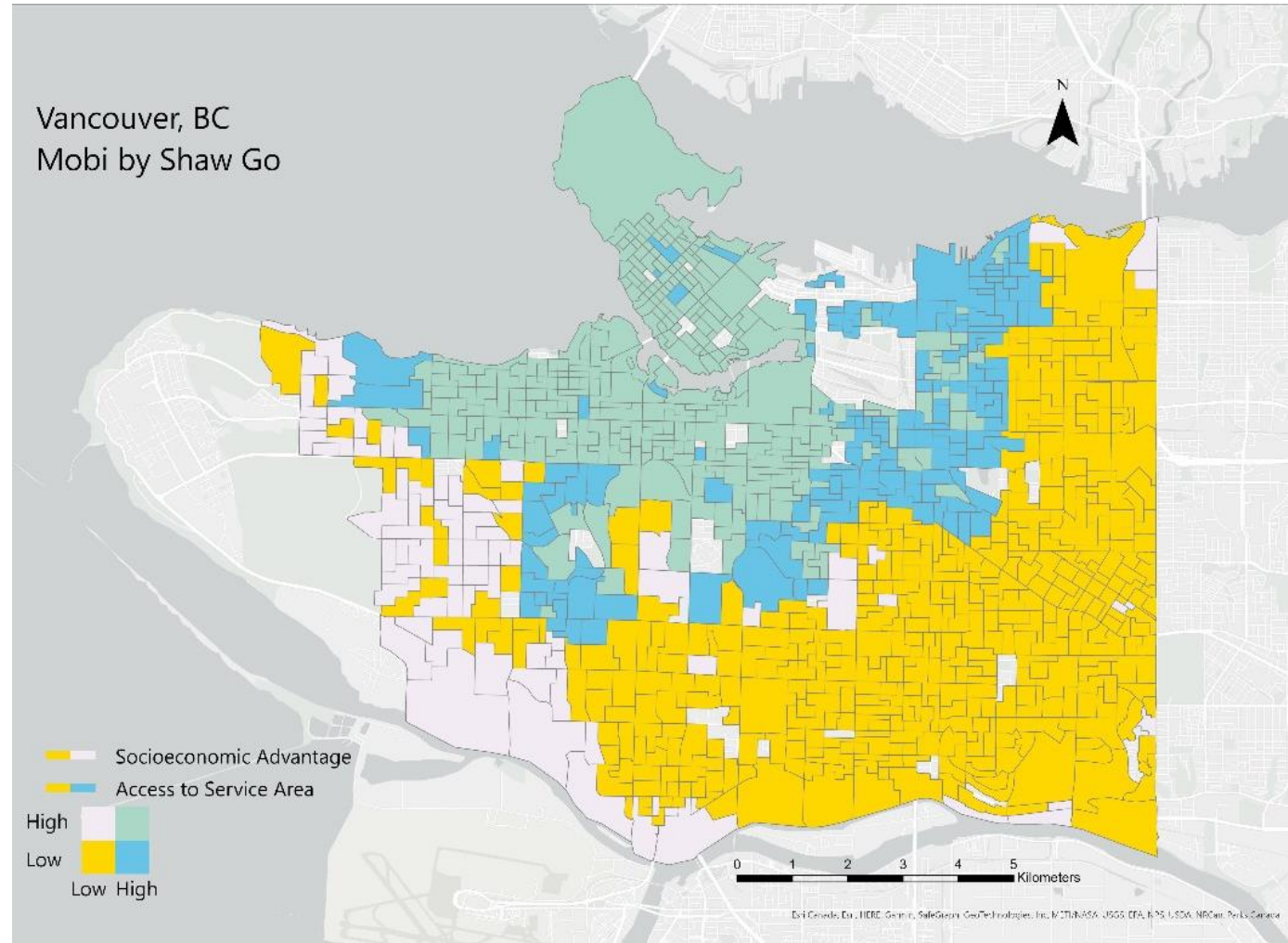
Initial implementation served neighbourhoods that were:

- Wealthier
- More educated
- Less racially diverse
- Higher socio-economic status



# Did the expansion make access to bike share more equitable based on socioeconomic status?

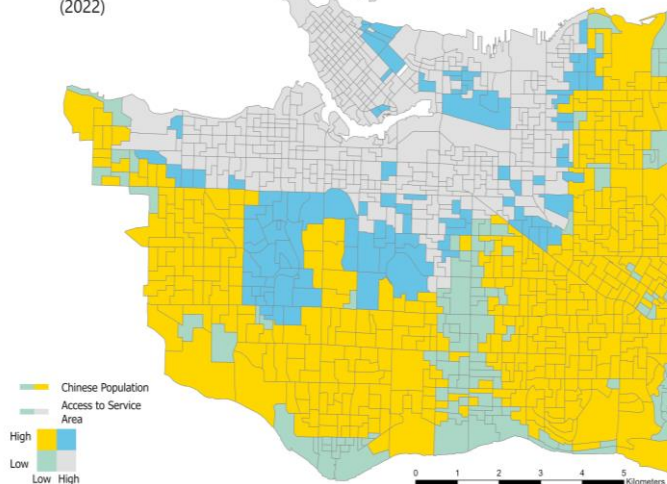
**Socio-Economic  
Advantage  
+  
Bike Share  
Access**



# Did the expansion make access to bike share more equitable across sociodemographic groups?

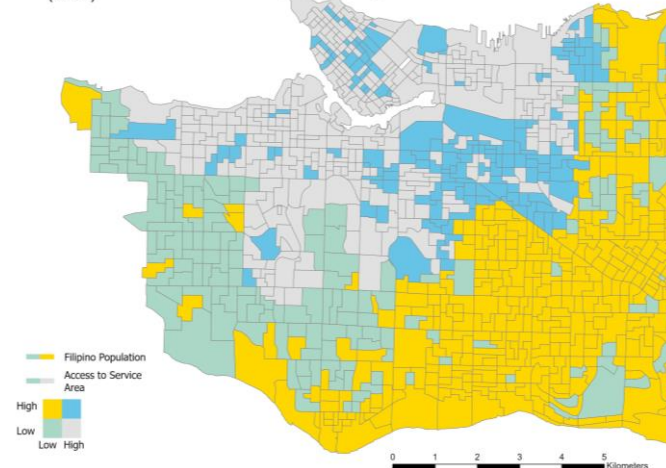
**Socio-  
Demographic  
Group  
+  
Bike Share  
Access**

Vancouver, BC  
Mobi by Shaw Go  
(2022)



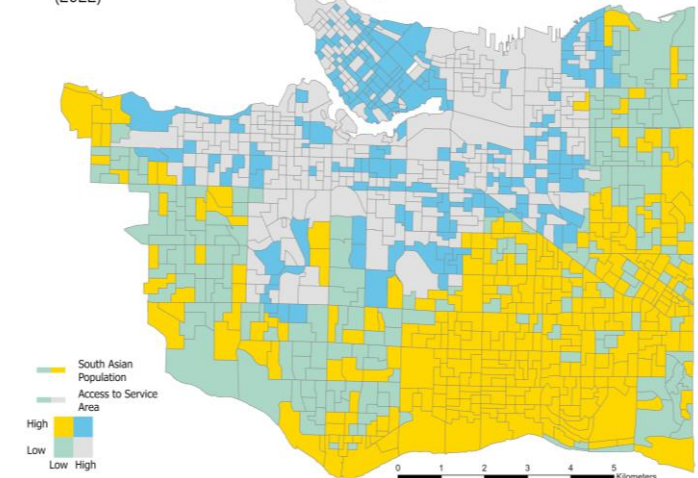
Chinese

Vancouver, BC  
Mobi by Shaw Go  
(2022)



Filipino

Vancouver, BC  
Mobi by Shaw Go  
(2022)



South Asian



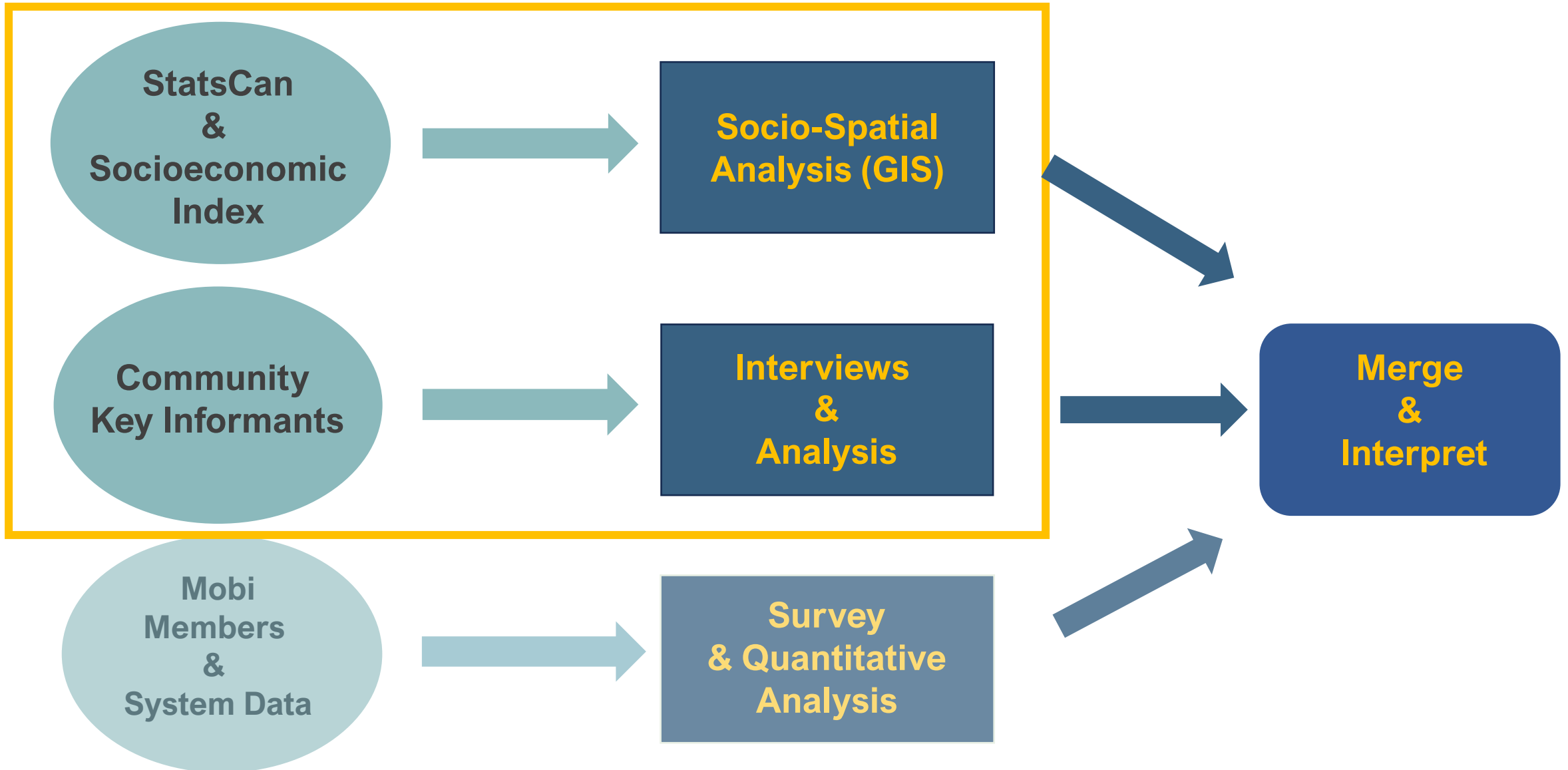


**Spatial  
Access**

**Equitable  
Access**

**Socioeconomic  
Access**

# Mixed Methods Study Design





“folks **don’t have a driver's license**...in terms of being a barrier. The Mobi bike pass is great because they can **just hop on [and] come to work.**”

## Employment

“They have a **bike station** like right in their **[school] parking lot**...it's very convenient.”

## Education

“It helped me to have **more mobility** in the city and also **visit my daughter more often.**”

## Social Inclusion & Support

# Key Learnings

- **Spatial access + Socioeconomic access**
- **GIS in mixed method research**
- **Impacts of Mobi's equity initiatives & Social Determinants of Health**

