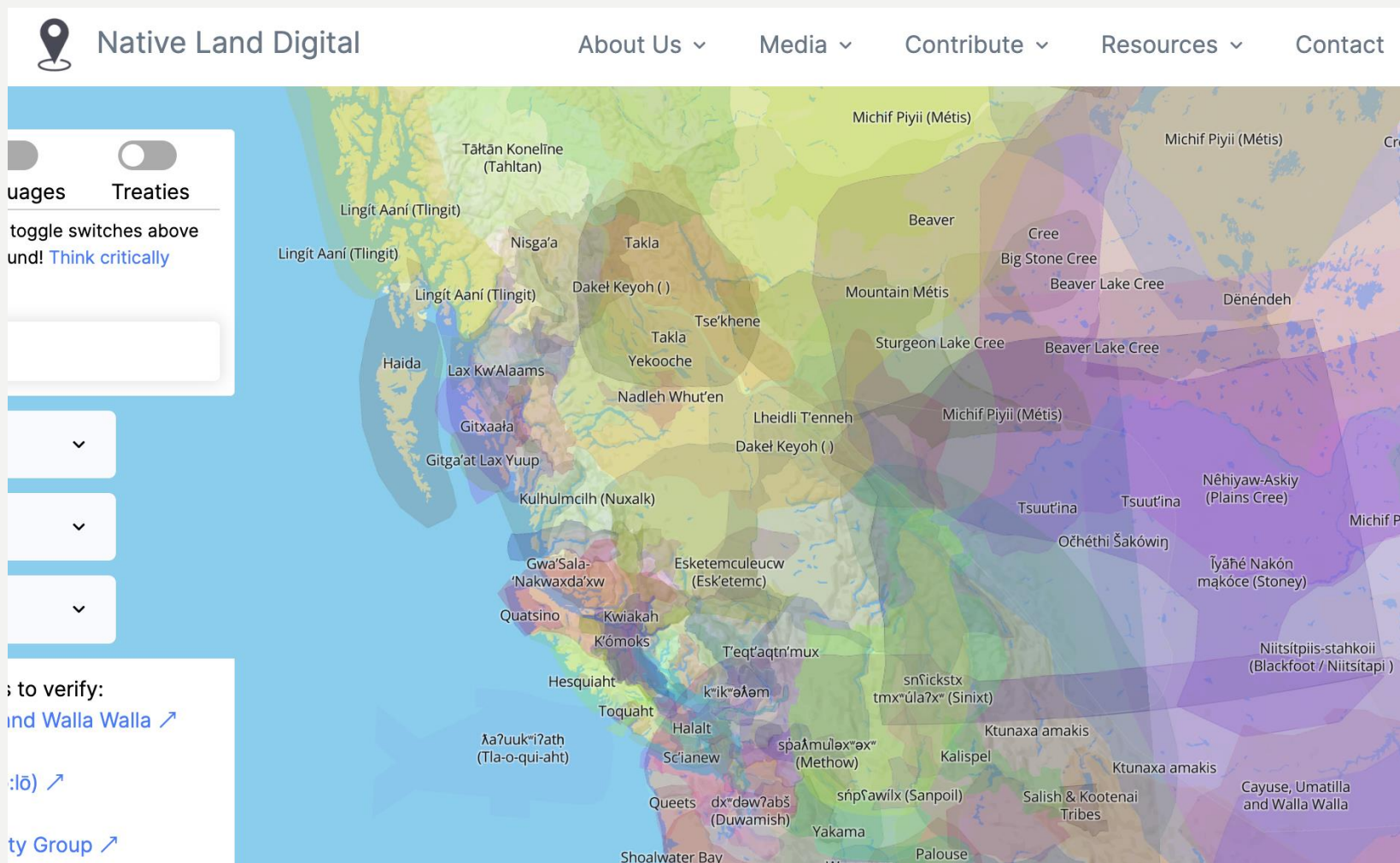


Mapping Canadian Community Initiatives Addressing Transport Poverty

AND WHAT I LEARNED AS A NEW
ARCGIS ONLINE USER

Land Acknowledgement

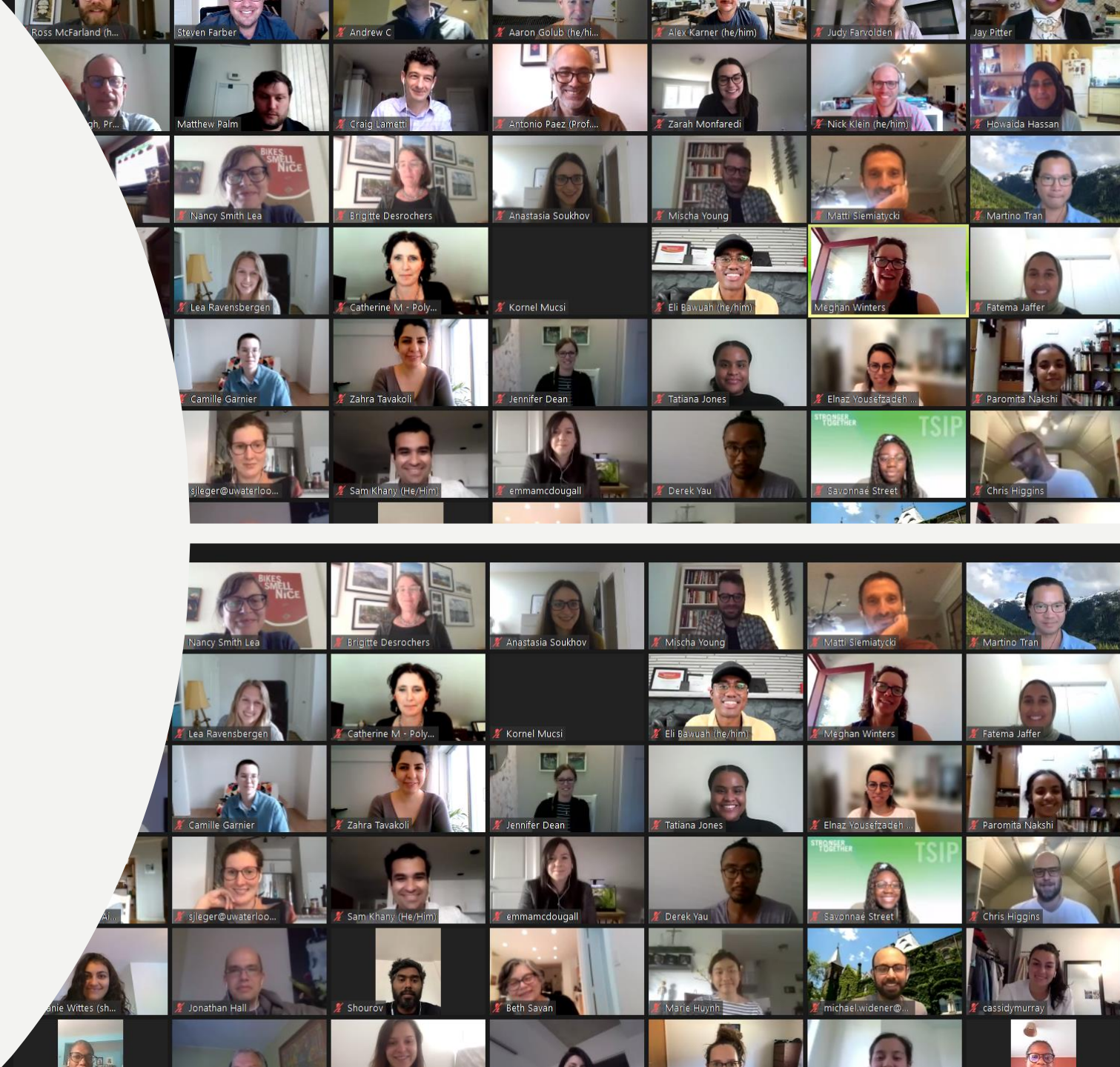


Purpose of this presentation

- Highlight work being done in transportation justice by the Mobilizing Justice partnership
- Provide an overview of how we used GIS to increase the impact of one project
- Tell a story about my experience learning GIS, and advice for other people interested in doing the same

What is Mobilizing Justice?

Mobilizing Justice is a **multi-disciplinary and multi-sector partnership** that builds sustainable connections for research and knowledge exchange to address **transportation inequities in Canada.**



What is the Catalogue of Canadian Community Initiatives Addressing Transport Poverty?

The catalogue is a project of the **Mobilizing Justice** partnership and **The Centre for Active Transportation** started in 2021 that documents and describes **the ways that community organizations around Canada are supporting transport equity**. It currently contains nearly 300 initiatives!

This project is part of the Transportation Modes working group, one of the 6 working groups.

Academic Lead: Dr. Meghan Winters (SFU)

Partner Lead: Nancy Smith Lea (TCAT)

Why map the catalogue?

- **Showcase** the ways that Canadian community organizations are supporting transport equity
- Create a **visual and easy-to-use way to explore** the existing catalogue (spreadsheet)
- Present **key information** like locations, websites, and programming

From the catalogue: How are communities advancing transport equity?

- Supporting seniors, Indigenous communities, newcomers, low-income people, LGBTQ+, young people, people with disabilities, racialized people
- Examples:
 - Pedestrian and cyclist safety
 - Workshops and education
 - Co-op and DIY bike repair and bike shops
 - Advocacy for expanded public transit access and free/affordable transit
 - Volunteer-run safe rides in places with poor transport access

The map!

Map of Canadian Community Initiatives Addressing Transport Poverty

Bookmarks for quick navigation to cities

Victoria
Vancouver
Edmonton
Calgary

Filters

Mode Focus

Choose one or more, or leave blank

☒ Active transportation

☐ Cycling

☐ Driving

☐ Public transit

☐ Sustainable transportation

☐ Walking

Searching by initiative name, organization name, or address

Search for an initiative, or

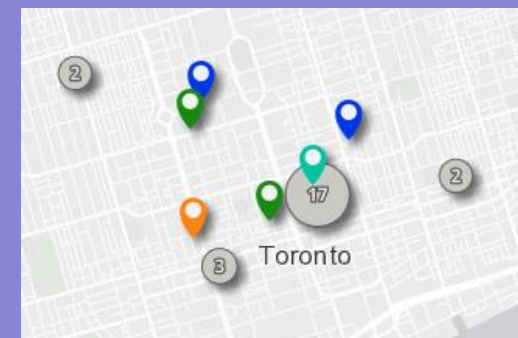
All

Initiatives in Catalogue

Host Organizations in Catalogue

Addresses and Locations

Aggregation of multiple locations



Colour-coded symbology by transport mode





- Active transportation
- Cycling
- Sustainable transportation
- Public transit
- Walking
- Driving

Building the Map

The basics

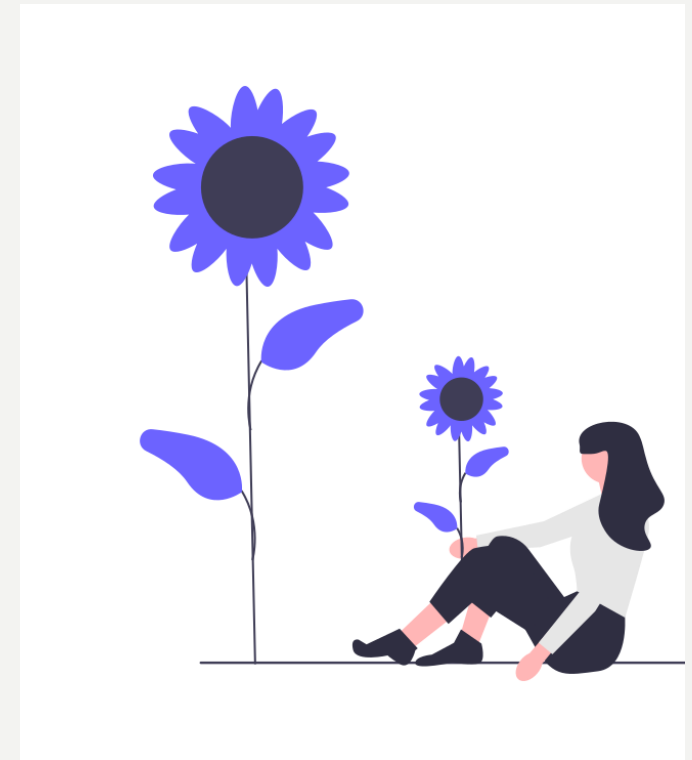
- Data documented in CSV format (UTF-8)
- ArcGIS Online web map and Instant App
- Geocoded using the ArcGIS World Geocoding Service

Roadbumps

- Places getting mapped in the middle of the ocean 
- Initiatives with no specific address – where to put them? 
- Overlapping places 
- Figuring out where changes should be made – at the data level? Layer? Web map? App? 

Reflections from the learning process

- **Plan ahead** and spend time thinking and planning up front to minimize major rework.
- **Start simple**. Get the basics down before adding new features; it's easy to get carried away and find out you've strayed from the original intent.
- **Ask for help** if you're feeling stuck. Try consulting online resources but also reach out to other people like a GIS Peer at the SFU library.
- **Test it out** with other people – ask other people to try out what you've created and get their input. If you can, test it with some people who are representative of the actual end users.
- **It probably won't be perfect (and that's ok) – there will probably be big and small issues that you discover throughout.**



THANK YOU!

Check out the map at:

<https://hub.mobilizingjustice.ca/pages/community-initiatives>

**While you're there, check out the Transportation Equity Dashboard
as well **