

GIS in Facilities Services

16 NOV 2022

Jessica Li

GIS Specialist, SFU Facilities Services | Campus Planning & Development

AGENDA

1. Introduction

2. SFU Facilities Services Mapping Platform - ViewSFU

3. Operational Applications: Data Collecting Tools

4. Spatial Analysis For Planning Purpose

5. Q&A

Introduction

Introduction

SFU Facilities Services is responsible for stewardship of Simon Fraser University's lands and buildings that serve:

- More than 26,000 students
- More than 432,000 sqm of campus buildings
- 156.8 hectares of land

GIS in SFUFS

→ **When:** using GIS since 2011

→ **What:**

Data: utilities, buildings, amenities, aerial photo, campus maps, floorplans, 3D Scans, LIDAR etc.

Software: ArcGIS Enterprise, ArcMap, ArcGIS Pro, ArcGIS Online

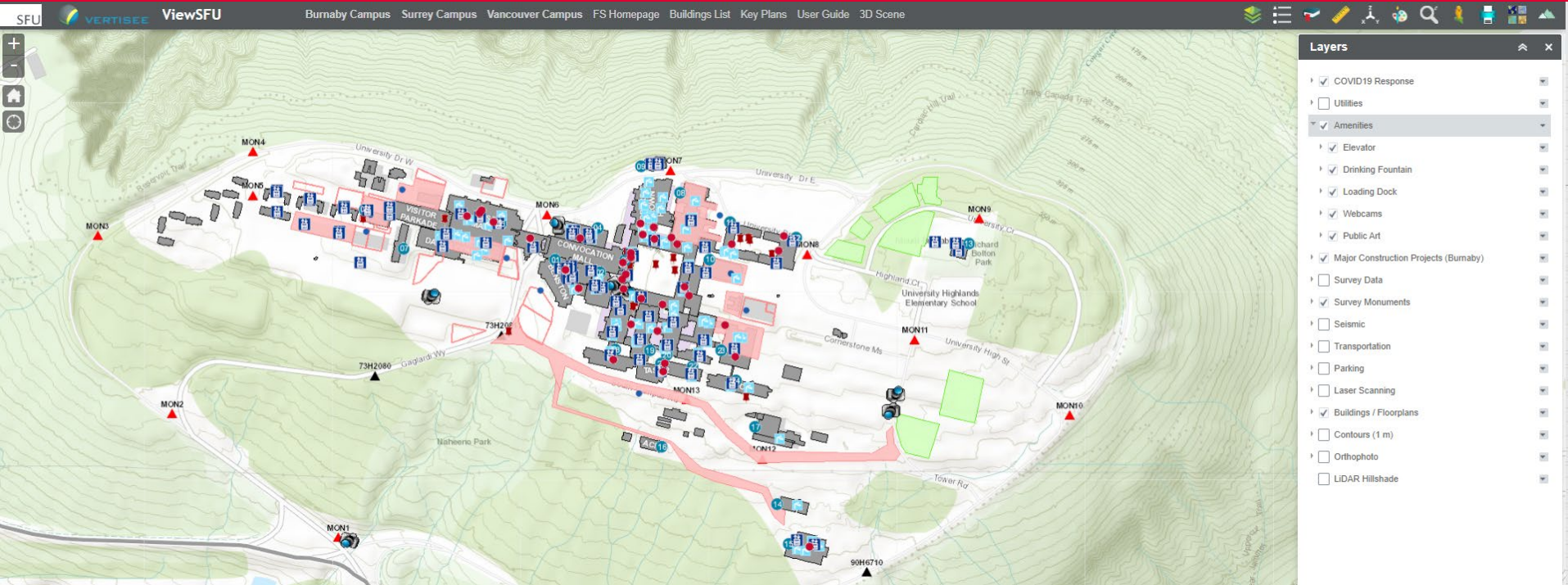
→ **Who:** 1 GIS Specialist + 1 Coop Student + External Support

→ **How:** mapping services – visualization maps & operational apps

More Info: <https://www.sfu.ca/fs/campus-maps/mapping-services.html>

VIEWSFU

VIEWSFU - VERTISEE



- Launched on **June 18, 2019**
- Almost **6000** pageviews in total
- More than **1000** unique viewers in total

Users

354



Sessions

1,480



Pageviews

1,965



2020

Users

300



Sessions

1,144



Pageviews

1,521



2021

Users

337



Sessions

1,068



Pageviews

1,384



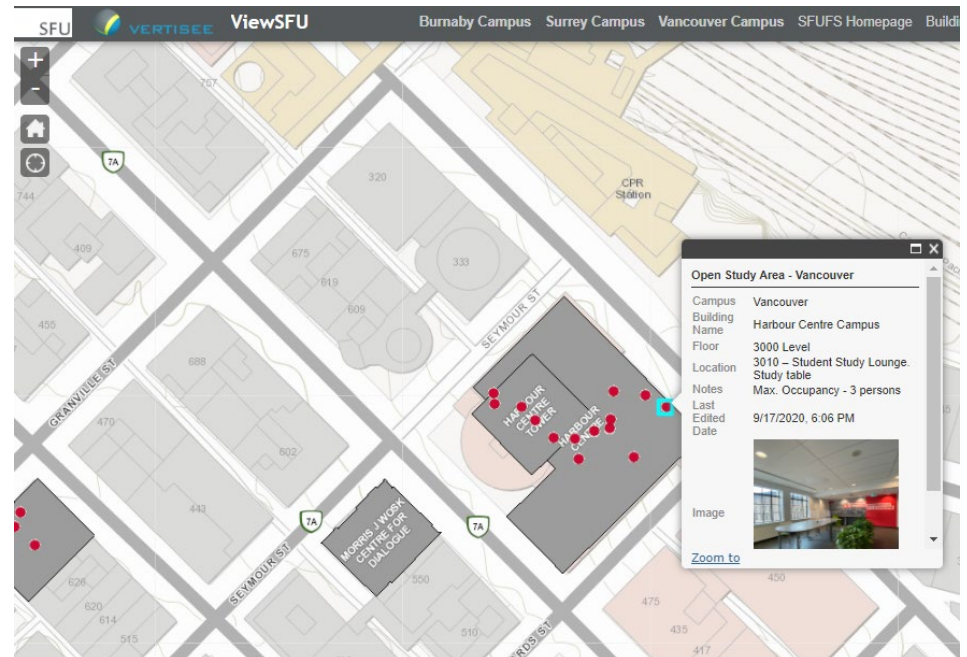
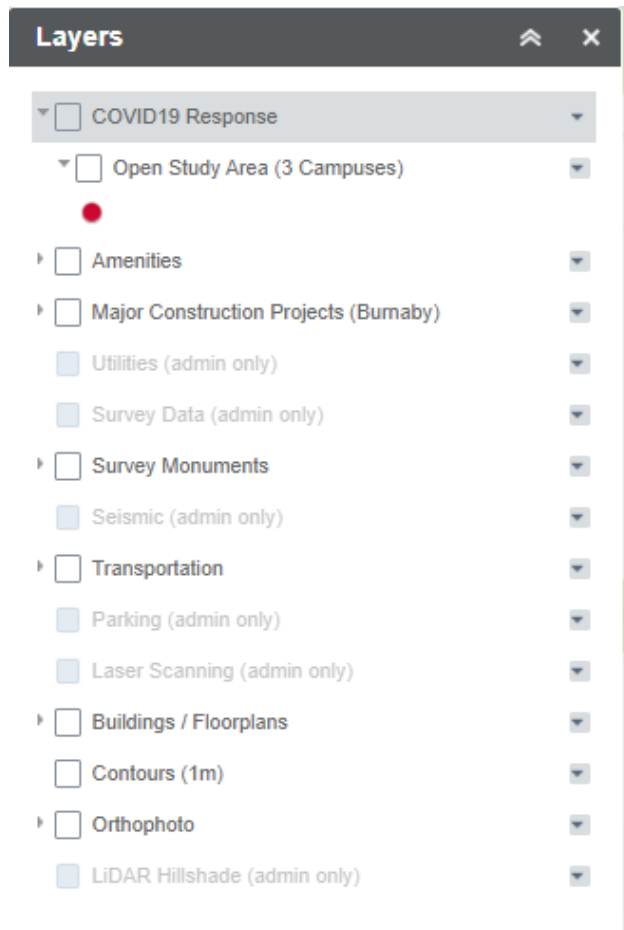
2022

VIEWSFU VERTISEE

<https://viewsfu.its.sfu.ca/apps/vertisee/public/>



SCAN ME

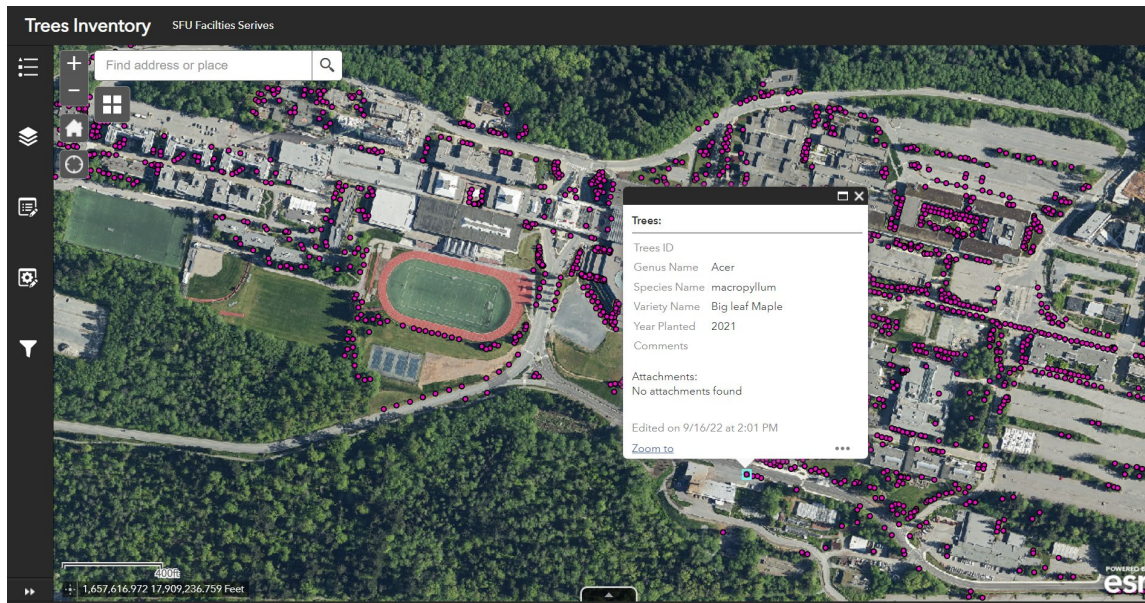


Data Collecting Tool

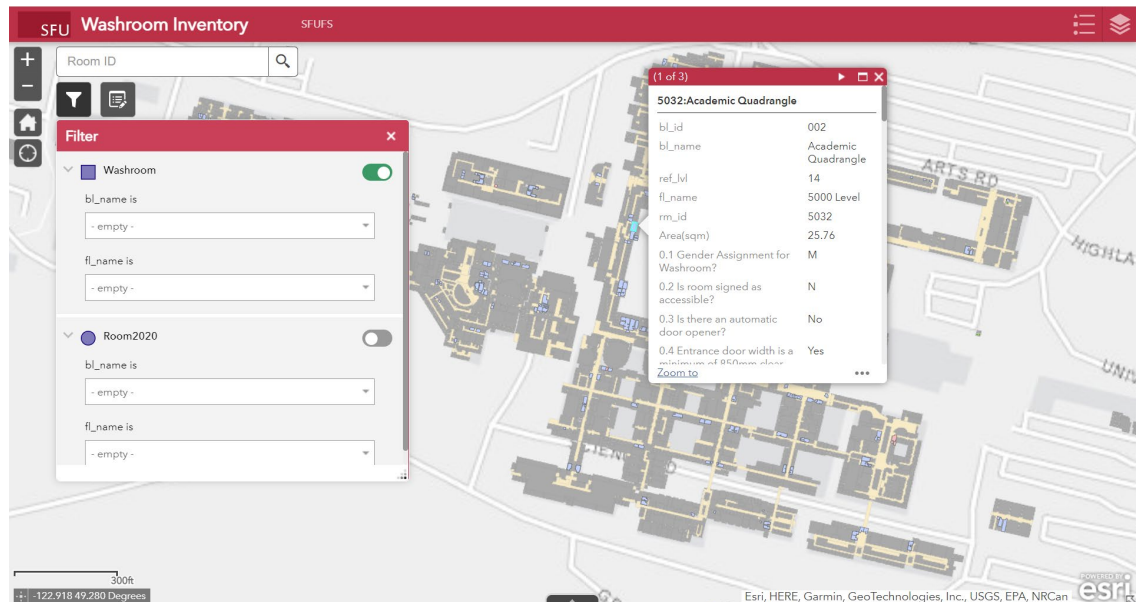
Customized Data Collector App

- Intuitive Interface
- Customizable Attribute Forms
- Create & Collect Custom Feature Classes
- Able to Access via Mobile Device
- Streamline Field Workflows
- Real-time Update

Trees Inventory

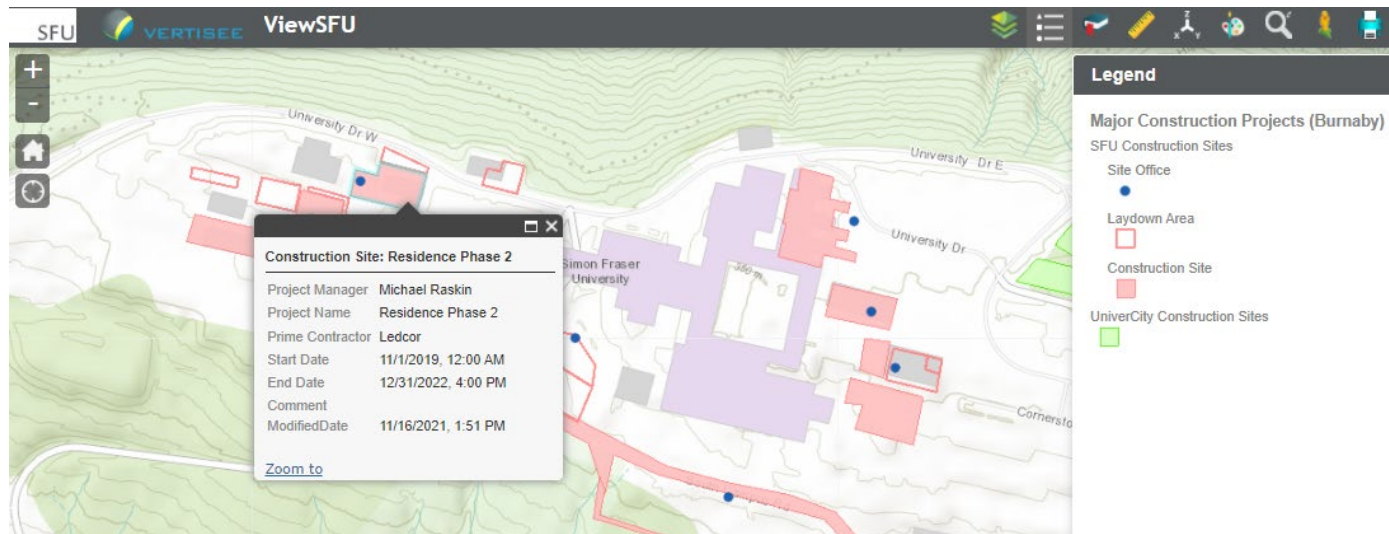
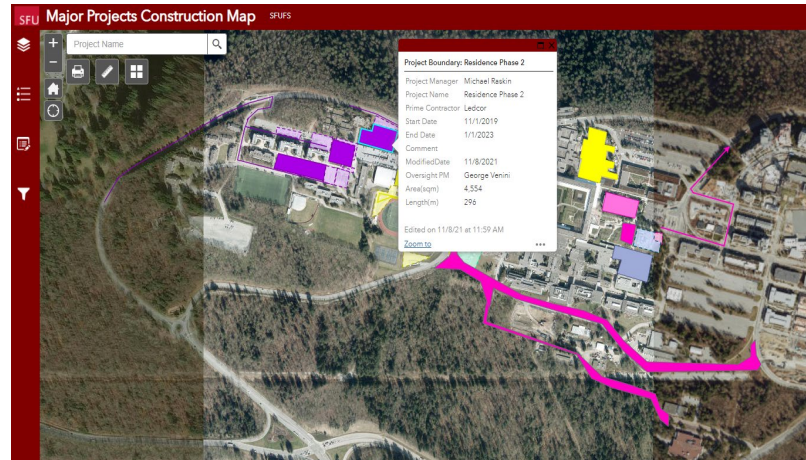


Washroom Inventory



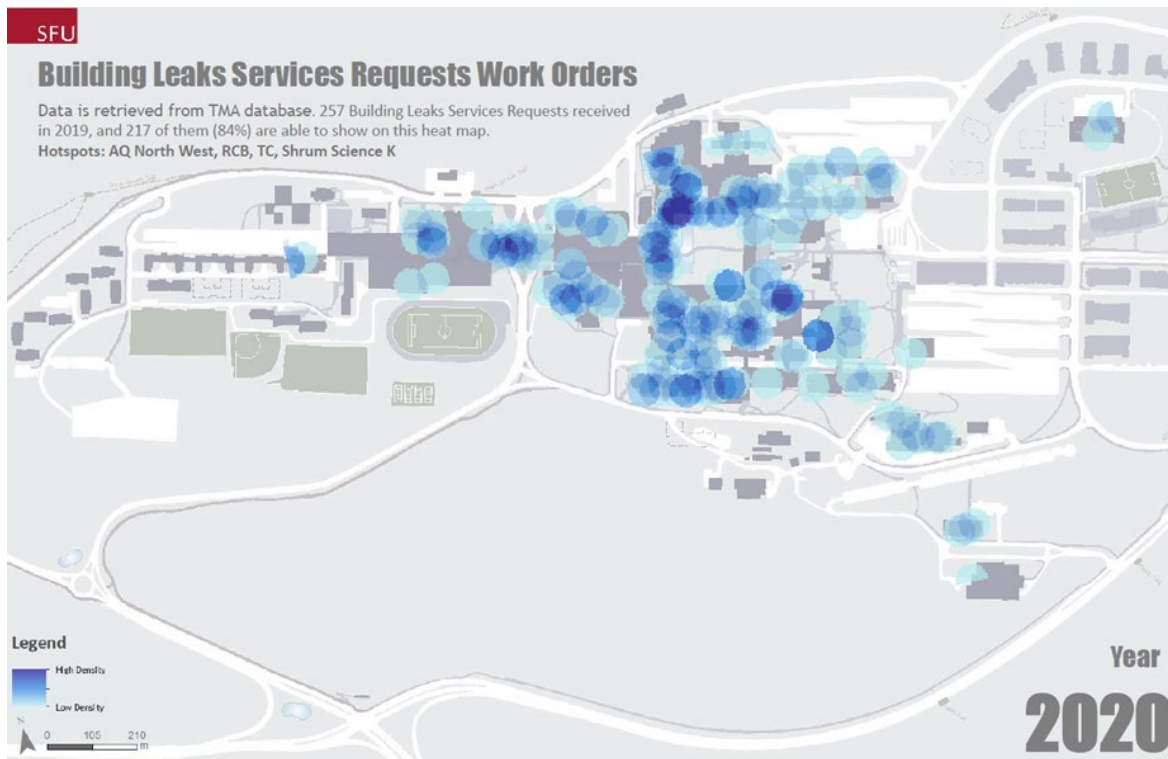
MAJOR PROJECT CONSTRUCTION MAP

Not just a map, but a collaboration & planning toolkit



Spatial Analysis

BUILDING LEAK ANALYSIS



Retrieved Data from Work
Order Request System

Data Integration

Running Spatial Analysis &
Mapping in GIS

Q & A

THANK YOU

