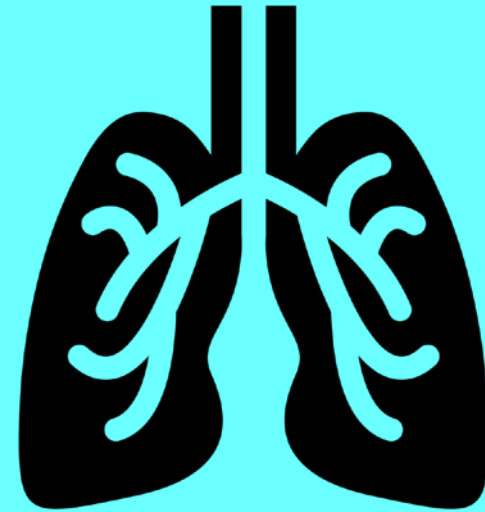
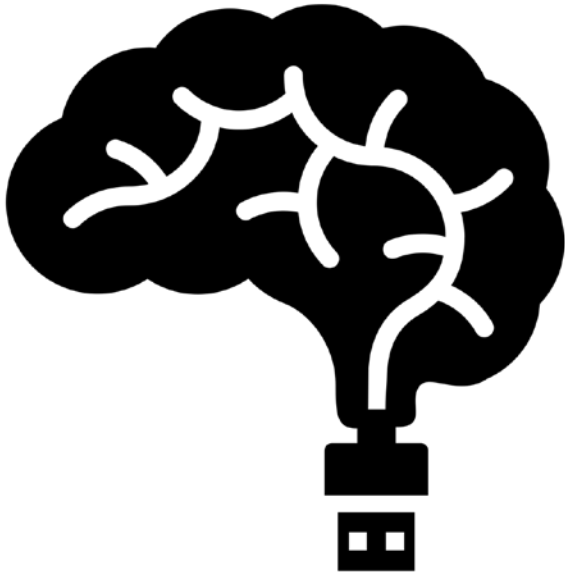


Library Research Workshop



**Life + Health
Sciences Librarian**

Hazel Plante
hazel_plante@sfu.ca

Objectives

By the end of the session, you will be able to:

- A. Develop a **search strategy** based on a research question
- B. Use these **databases** to find relevant articles:
 - 1) **PsycINFO**
 - 2) **Business Source Complete**
 - 3) **Ergonomics Abstracts**
- C. Understand the role of **citation management software** and how to get started with **Mendeley**

Getting started

Two **key questions** for finding the information you need:

1) What **words to use**?

Tip: Gather additional/better words as you go

2) **Where to look?**



Developing a search strategy

Sample topic:

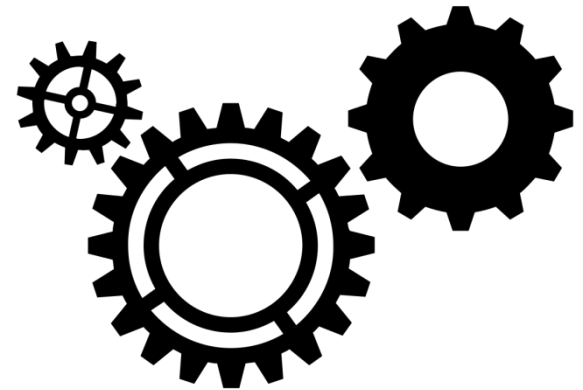
Is there a connection between autonomy and back pain in the workplace?

Developing a search strategy

Identify the **main concepts**.

For example:

- Autonomy
- Back pain
- Workplace



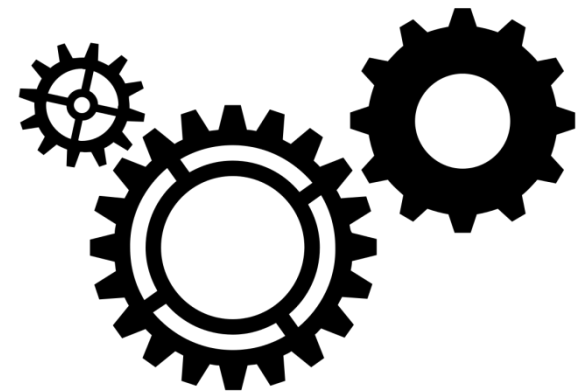
Developing a search strategy

List **related terms** for each concept.

Autonomy → ?

Back pain → ?

Workplace → ?



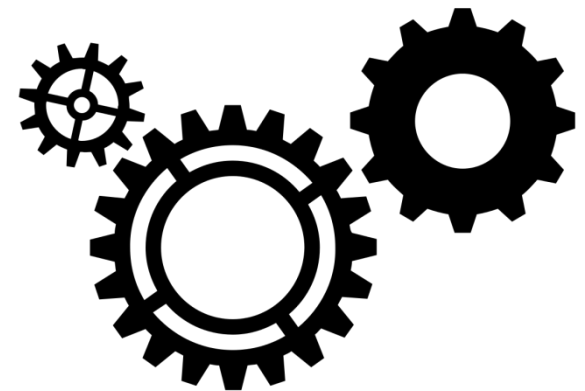
Developing a search strategy

List **related terms** for each concept.

Autonomy → job control, psychosocial factors, ...

Back pain → musculoskeletal injuries, ...

Workplace → work place, work environment, ...



Developing a search strategy

Use **OR** to combine related terms.

Use **AND** to combine concepts.

workplace

AND

back pain

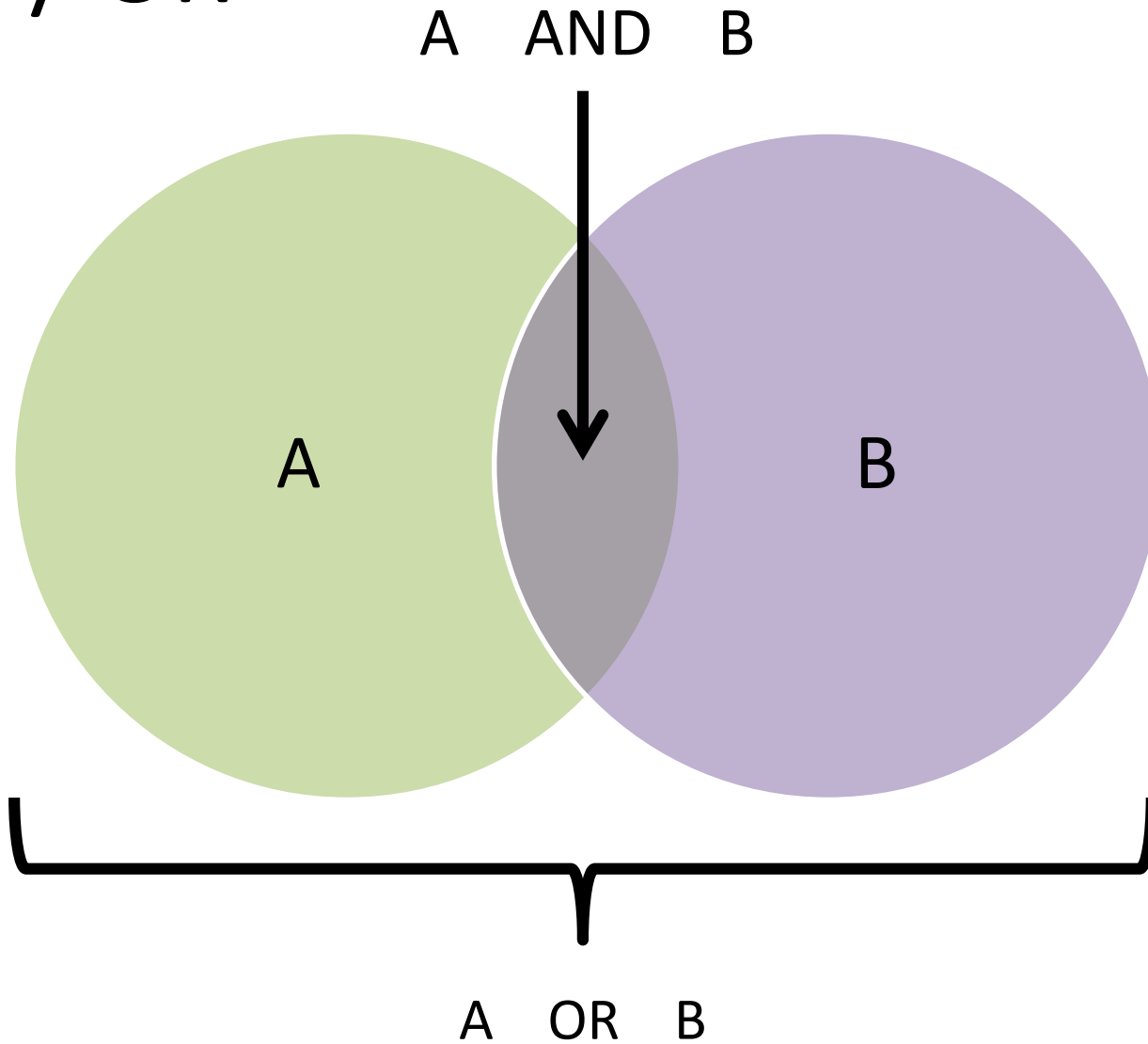
OR

musculoskeletal injuries

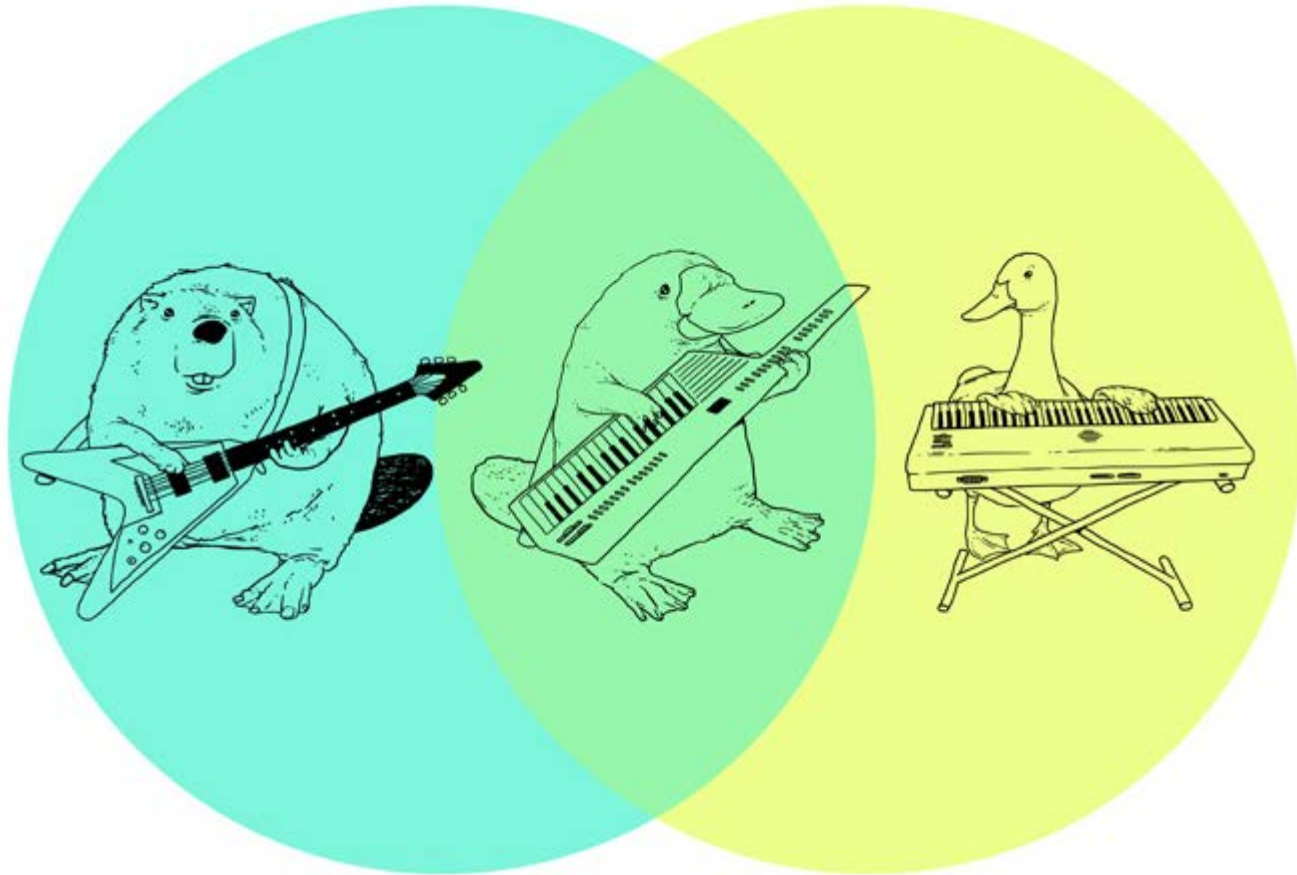
How this search strategy looks in a database:

All Fields ▼	workplace	
AND ▼	All Fields ▼	back pain OR musculoskeletal injuries
<input type="button" value="Search"/> or Add to history		

AND / OR



AND / OR



Advanced searching questions

How do you ...

- 1) search for a **specific phrase**?
- 2) find **variations on a root word** (fall, falls, falling, etc.)?
- 3) find articles **about** a topic rather than ones that just **mention** it somewhere?
- 4) find the most **highly cited** articles on a topic?
- 5) use **one relevant article** to find additional relevant articles?

To narrow your search

- Add in new concepts with **AND**
 - Falls AND older adults
- Use **quotation marks**
 - “Physiological Profile Assessment”
- Use **limiters** to refine your search
 - e.g., limit by **date**, **age range**, etc.
- Sort **field searching**
 - e.g., searching only in the “Title” field
- Search using **subject headings**
 - to find articles **about** your topic

To expand your search

- Add more related terms with **OR**
 - older adults OR elderly OR senior citizens
- Use an **asterisk**
 - *fall**
- Use **broader keywords**
 - intervention (vs. programs, education, exercise, etc.)
- Look at **bibliographies, abstracts, and similar articles**

Getting started

Two **key questions** for finding the information you need:

1) What **words to use**?

Tip: Gather additional/better words as you go

2) **Where to look?**



A sample search in a database:

	All Fields ▼	workplace OR "work place"
AND ▼	All Fields ▼	back pain OR musculoskeletal injuries
AND ▼	All Fields ▼	autonomy OR job control OR psychosocial factors
AND ▼	All Fields ▼	

or [Add to history](#)

A few ways to limit and improve your search results:

Searching: **PsycINFO** | Choose Databases
 Suggest Subject Terms

autonomy OR job control OR psychosocial f Select a Field (option... **Search** **Clear** ?

AND work place or workplace Select a Field (option...
AND back pain OR musculoskeletal inj Select a Field (option... + -

Basic Search Advanced Search Search History ▶

Refine Results

Current Search

Boolean/Phrase:
(autonomy OR job control OR psychosocial factors*) AND (work p...

Limit To

Linked Full Text
 References Available
 Open Access

1987 Publication Date 2015

Source Types

All Results
 Academic Journals (41)
 Dissertations (4)
 Books (3)

Search Results: 1 - 48 of 48 Relevance Page Options Share

1. **Psychosocial safety climate, psychosocial and physical factors in the aetiology of musculoskeletal disorder symptoms and workplace injury compensation claims.**

Academic Journal
Bailey, Tessa S.; Dollard, Maureen F.; McLinton, Sarven S.; Richards, Penelope A. M.; **Work & Stress**, Vol 29(2), Apr, 2015 pp. 190-211. Publisher: Taylor & Francis; [Journal Article]

Subjects: Injuries; Musculoskeletal Disorders; Psychosocial Factors; Workers' Compensation Insurance; Occupational Health; Adulthood (18 yrs & older); Young Adulthood (18-29 yrs); Thirties (30-39 yrs); Middle Age (40-64 yrs); Aged (65 yrs & older); Male; Female

Show all 4 images

Cited References: (63) PDF Full Text PlumX Metrics

You can limit by publication date here.

You can search by SUBJECTS to find articles ABOUT a topic (i.e., more relevant articles), rather than ones that simply MENTION a topic.

2. **Pain-related work interference is a key factor in a worker/workplace model of work absence duration due to musculoskeletal conditions in Canadian nurses.**

Academic Journal
Murray, Eleanor; Franche, Renée-Louise; Ibrahim, Selahadin; Smith, Peter; Carnide, Nancy; Côté, Pierre; Gibson, Jane; Guzman, Jaime; Koehoorn, Mieke; Mustard, Cameron; **Journal of Occupational Rehabilitation**, Vol 23(4), Dec, 2013 pp. 585-596. Publisher: Springer; [Journal Article]

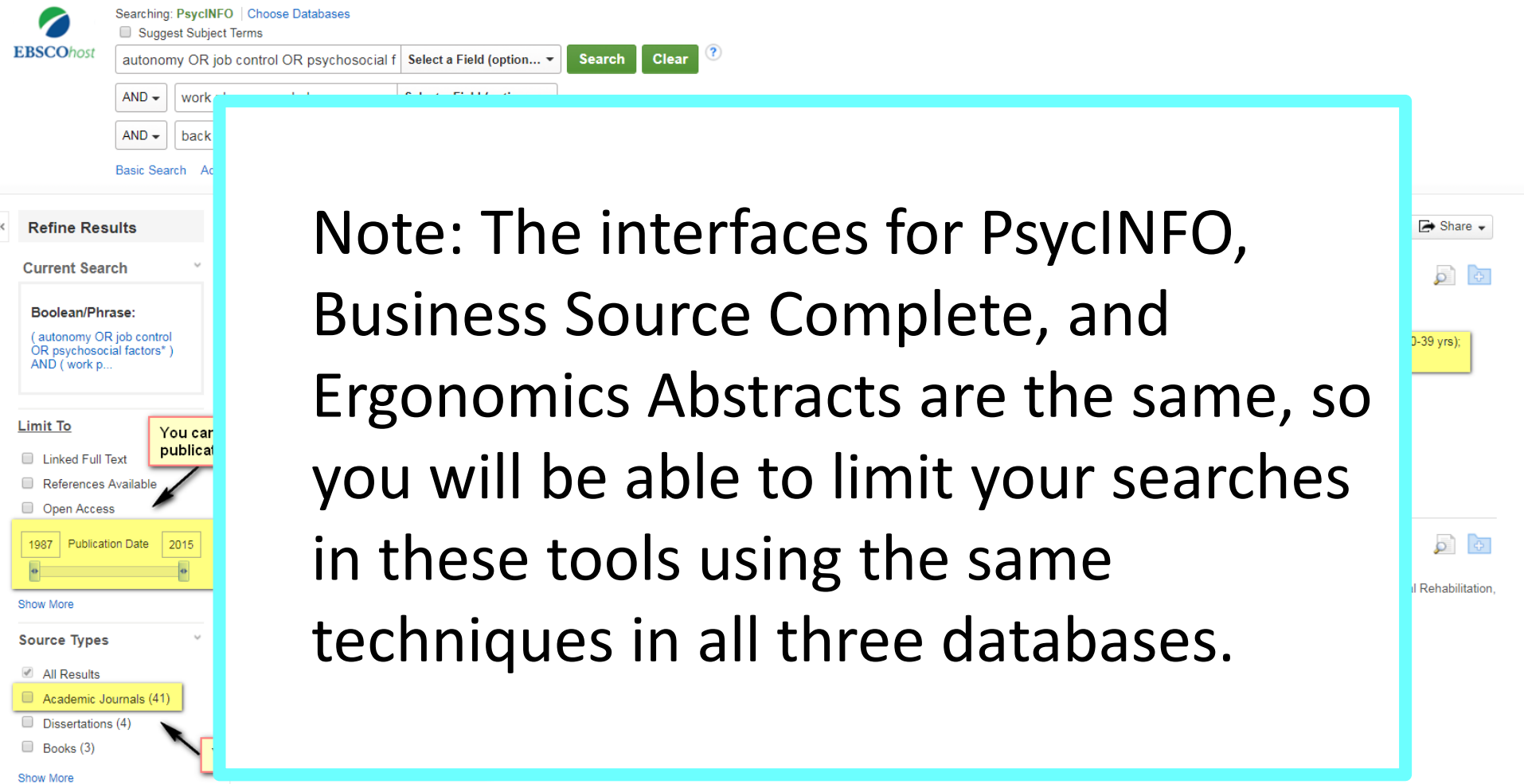
Subjects: Employee Absenteeism; Musculoskeletal Disorders; Nurses; Pain; Working Conditions; Adulthood (18 yrs & older); Female

Show all 4 images

Cited References: (50) PlumX Metrics

You can limit by document type here.

A few ways to limit and improve your search results:



The image shows a screenshot of a search interface, likely EBSCOhost, with a large text overlay. The interface includes a search bar with the text "autonomy OR job control OR psychosocial f", a "Search" button, and a "Clear" button. Below the search bar, there are options for "AND" and "back". The "Refine Results" section is visible, showing the current search criteria: "(autonomy OR job control OR psychosocial factors*) AND (work p...". Under "Limit To", there are checkboxes for "Linked Full Text", "References Available", and "Open Access". A date range filter is set from 1987 to 2015. Under "Source Types", there are checkboxes for "All Results", "Academic Journals (41)", "Dissertations (4)", and "Books (3)". A red box highlights the "Academic Journals (41)" option. A red box also highlights the "Open Access" checkbox. A red box highlights the "1987" and "2015" date range. A red box highlights the "0-39 yrs)" filter. A red box highlights the "Share" button. A red box highlights the "Rehabilitation," filter.

Note: The interfaces for PsycINFO, Business Source Complete, and Ergonomics Abstracts are the same, so you will be able to limit your searches in these tools using the same techniques in all three databases.

Citation management software

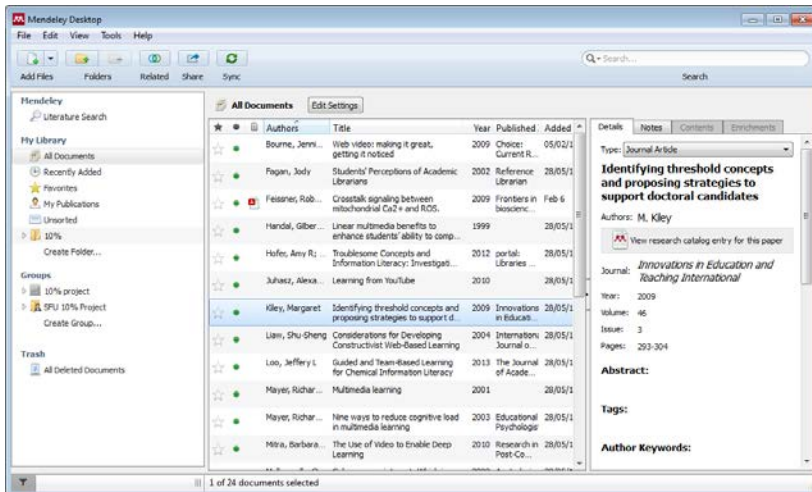
- Well-known tools include
 - Mendeley
 - Zotero
- Commonalities
 - Import citations
 - Access, organize, search and store citations
 - Share citations
 - Create bibliographies and add in-text citations



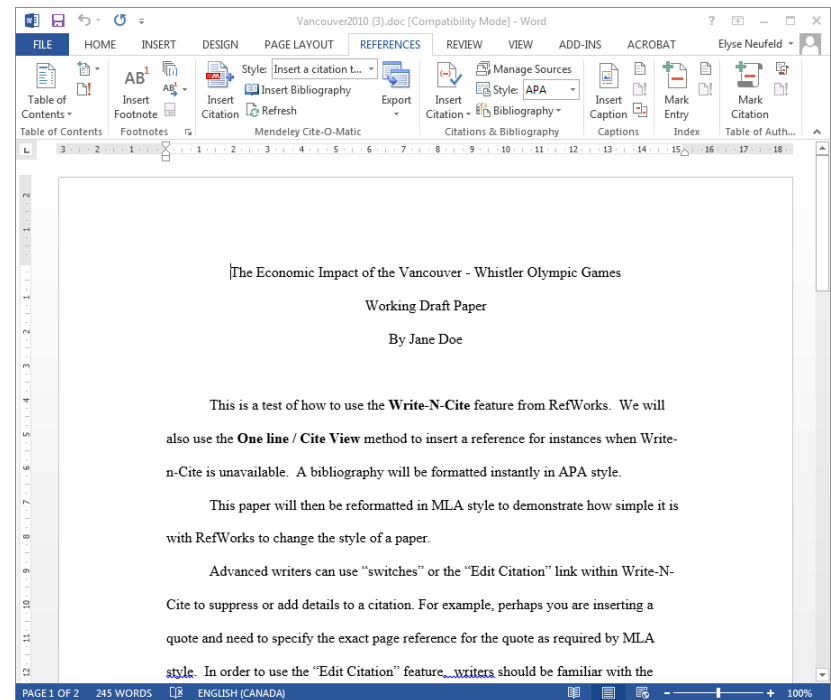
MENDELEY

1. Your library of references:

- Mendeley Desktop, or
- Mendeley Web



2. MS Word plug-in: inserts citations in your paper and creates a bibliography



Importing documents into Mendeley (2 min. video)

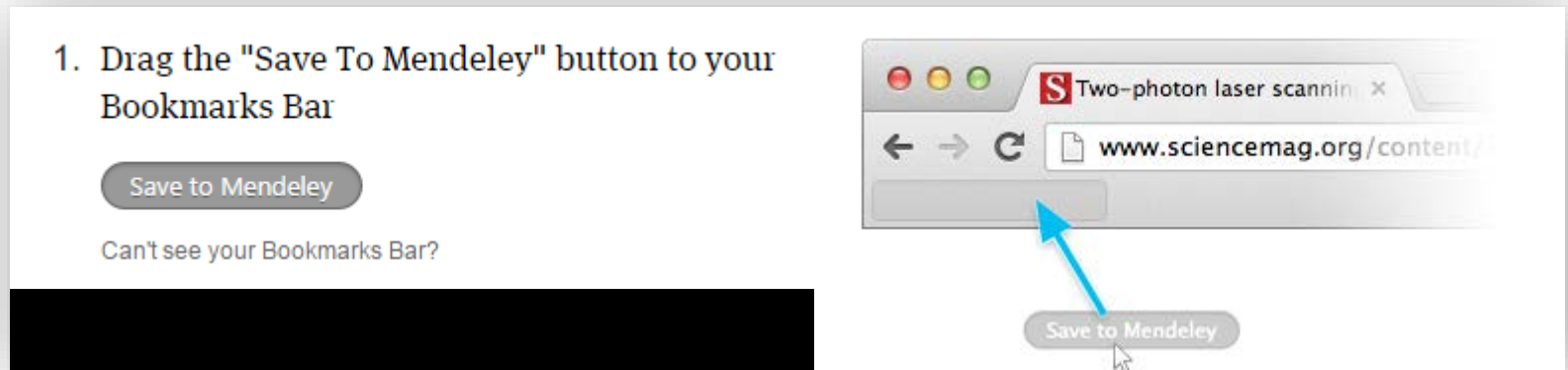
<https://youtu.be/qRiAlaqdAOg>



Mendeley: getting started

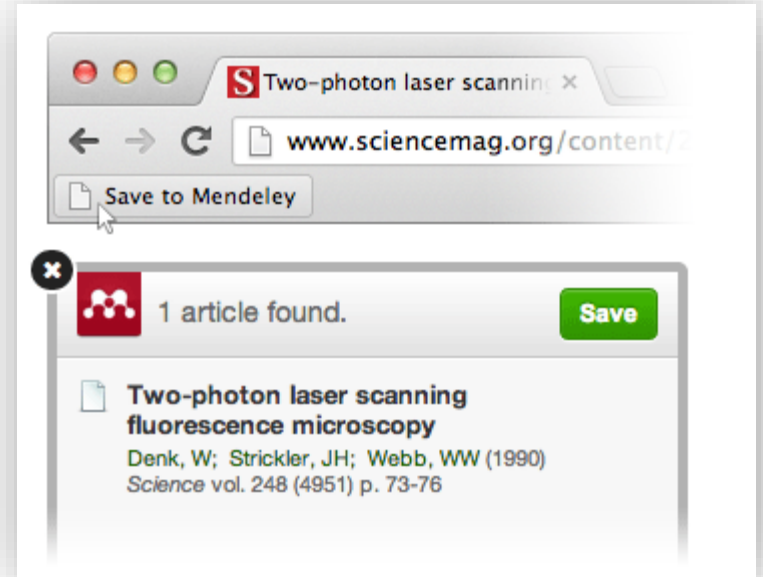
Add the bookmarklet

- Open **Chrome** and go to www.mendeley.com/import
- Drag the Save to Mendeley button to the bookmarks bar



Mendeley: import citations

- Import books & articles using the bookmarklet
 - Import from PubMed
 - Import from Fast Search



- Import articles from PDFs
 - Download article as PDF, then drag & drop it into Mendeley Desktop

Image credits

All icons used were published with CC-BY licenses or are in the public domain. They all come from The Noun Project: thenounproject.com

In order of appearance:

Lungs by chris dawson

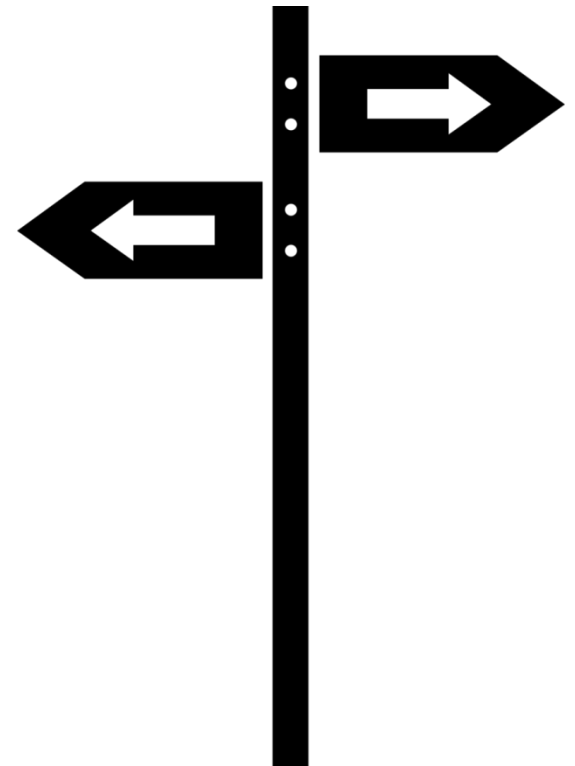
Brain-Machine-Interface by HYPERMORGEN

Glasses by Cor Tiemens

Gears by Mark Shorter

Juggle by AnsteyDesign

Signpost by Juan Pablo Bravo




Getting help

Ask a Librarian

Ways to reach us

- [AskAway](#): Chat online with our research experts and find answers to your questions.
- [Txt Us](#): Text us: Quick answers to short questions. 604.724.5898
- [Ask Us by Email](#): Most answers in one business day or less.
- Ask Us by Phone ([hours](#)):
 - W.A.C. Bennett Library (SFU Burnaby) 778.782.4345
 - Belzberg Library (SFU Vancouver) 778.782.5051
 - Fraser Library (SFU Surrey) 778.782.7414
- Ask Us in Person: [Research help desks](#) are available at all three SFU libraries ([hours](#)). [Book an appointment](#) or drop in.

AskAway 

AskAway is closed until Sept. 19th.

Please try our other [Ask a Librarian](#) services to get help via phone, email, or in person.

Contact a liaison librarian for in-depth research guidance

- [Liaison librarians](#): Specialists in the information sources and approaches used by specific university departments.